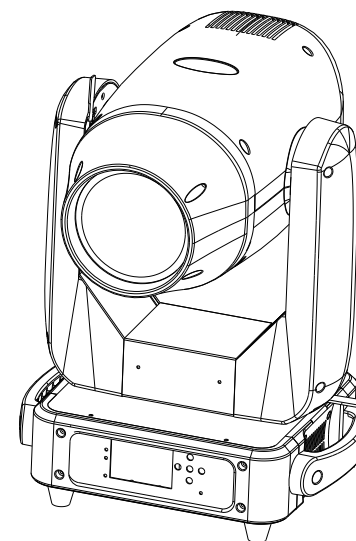


# CS400 LEDSPOT 400C



CE V ⚡ IP20 t<sub>a</sub> 40°C t<sub>c</sub> 150°C



**ADD** F1-5, Block 3, No.97, Guangzhu Rd, Lanhe Town, Nansha District,  
Guangzhou 511480

**Tel.** +86 20 8499 2310/2320/2330

**Fax** +86 20 8499 2360

**E-mail** info@color-imagination.com

**Website** www.color-imagination.com

**Follow  
us on**



[www.facebook.com/color.imagination.1](http://www.facebook.com/color.imagination.1)



[www.youtube.com/user/colorimaginationj](http://www.youtube.com/user/colorimaginationj)



[https://twitter.com/Color\\_lighting](https://twitter.com/Color_lighting)

## User Manual

KEEP THIS MANUAL FOR FUTURE NEEDS

## 1 SAFETY INSTRUCTIONS



### CAUTION

Becareful with your operations. With a dangerous voltage you can suffer a dangerous electric shock when touching wires!

This device has left the factory in perfect condition. In order to maintain this condition and to ensure a safe operation, it is absolutely necessary for the user to follow the safety instructions and warning notes written in this user manual.



### IMPORTANT

Damages caused by the disregard of this user manual are not subject to warranty. The dealer will not accept liability for any resulting defects or problems.

If the device has been exposed to temperature changes due to environmental changes, do not switch it on immediately. The arising condensation could damage the device. Leave the device switched off until it has reached room temperature.

This device falls under protection-class I. Therefore it is essential that the device be earthed.

The electric connection must carry out by qualified person.

The device shall only be used with rated voltage and frequency.

Make sure that the available voltage is not higher than stated at the end of this manual.

Make sure the power cord is never crimped or damaged by sharp edges. If this would be the case, replacement of the cable must be done by an authorized dealer.

Always disconnect from the mains, when the device is not in use or before cleaning it. Only handle the power cord by the plug. Never pull out the plug by tugging the power cord.

During initial start-up some smoke or smell may arise. This is a normal process and does not necessarily mean that the device is defective, it should decrease gradually.

Please don't project the beam onto combustible substances.

Fixtures cannot be installed on combustible substances, keep more than 50cm distance with wall for smooth air flow, so there should be no shelter for fans and ventilation for heat radiation.

If the external flexible cable or cord of this luminaire is damaged, it shall be exclusively replaced by the manufacturer or his service agent or a similar qualified person in order to avoid a hazard.

## 7 MAINTENANCE AND CLEANING

The following points have to be considered during the inspection:

- 1) All screws for installing the devices or parts of the device have to be tightly connected and must not be corroded.
- 2) There must not be any deformations on the housing, color lenses, fixations and installation spots (ceiling, suspension, trussing).
- 3) Mechanically moved parts must not show any traces of wearing and must not rotate with unbalances.
- 4) The electric power supply cables must not show any damage, material fatigue or sediments.

Further instructions depending on the installation spot and usage have to be adhered to by a skilled installer and any safety problems have to be removed.



### CAUTION

Disconnect from mains before starting maintenance operation.



In order to make the lights in good condition and extend the life time, we suggest a regular cleaning to the lights.

- 1) Clean the inside and outside lens each week to avoid the weakness of the lights due to accumulation of dust.
- 2) Clean the fan each week.
- 3) A detailed electric check by approved electrical engineer each three months, make sure that the circuit contacts are in good condition, prevent the poor contact of circuit from overheating.

We recommend a frequent cleaning of the device. Please use a moist, lint-free cloth. Never use alcohol or solvents.

There are no serviceable parts inside the device. Please refer to the instructions under "Installation instructions".

Should you need any spare parts, please order genuine parts from your local dealer.

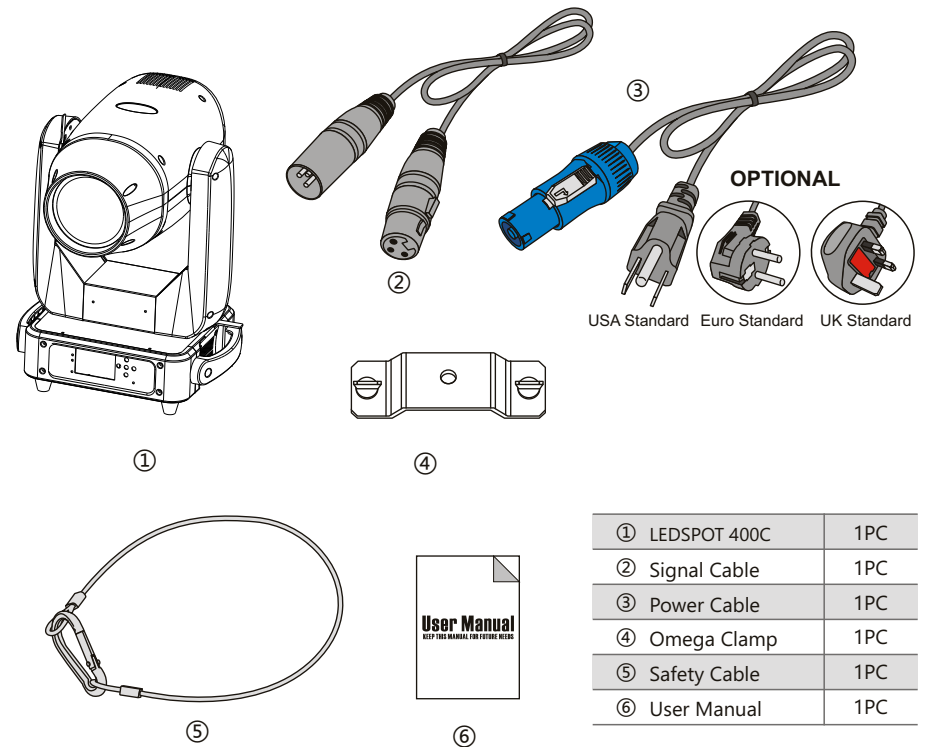
			30-39	Gobo 3
			40-49	Gobo 4
			50-59	Gobo 5
			60-69	Gobo 6
			70-79	Gobo 7
			80-89	Gobo 1 shaking slow to fast
			90-99	Gobo 2 shaking slow to fast
			100-109	Gobo 3 shaking slow to fast
			110-119	Gobo 4 shaking slow to fast
			120-129	Gobo 5 shaking slow to fast
			130-139	Gobo 6 shaking slow to fast
			140-149	Gobo 7 shaking slow to fast
			150-200	Fast to slow positive rainbow
			201-205	Stop
			206-255	Slow to fast negative rainbow
C15	CH14	GOBO ROTATING	0-127	0-400 degree
			128-190	Fast to slow positive rainbow
			191-192	Stop
			193-255	Slow to fast negative rainbow
CH16		ROT FINE	0-255	
CH17	CH15	PRISM 1	0-63	Close
			64-127	Open
CH18	CH16	PRISM 1 ROT	0-127	0-400 degree
			128-187	Fast to slow positive rainbow
			188-195	Stop
			196-255	Slow to fast negative rainbow
CH19	CH17	PRISM 2	0-63	Close
			64-127	Open
CH20	CH18	PRISM 2 ROT	0-127	0-400 degree
			128-187	Fast to slow positive rainbow
			188-195	Stop
			196-255	Slow to fast negative rainbow
CH21	CH19	FROST	0-127	No function
			128-255	Frost
CH22		RESERVED	0-127	No function
			128-255	Frost
CH23	CH20	ZOOM	0-255	Small to big
CH24	CH21	FOCUS	0-255	Far to near
CH25		FOCUS FINE	0-255	
CH26	CH22	RESET	210-215	6 seconds to reset motors
			220-235	6 seconds to reset motors
			240-255	6 seconds to reset all

## 2 UNPACKING

The LEDSPOT 400C is a new generation professional and intelligent LED moving head spot designed with a full CMY color mixing system plus CTO color correction, smooth and linear zoom from 4°-35°. The SPOT features a new high intensity and efficiency cool white 400W LED engine (8500K) delivering ultra high light output through a set of high resolution and precise optics that helps to provide extremely clear and even spot coverage. It offers a full complement of other professional characteristics, a rotating gobo wheel with 7 rotating and interchangeable glass gobos, a static gobo wheel with 12 gobos, a color wheel with 8 dichroic colors, 2 rotating prisms, frost filter, linear electronic focus, linear dimmer, variable speed shutter/strobe, full color 180° reversible TFT display with 5 control buttons, etc. The LEDSPOT 400C supports DMX, RDM (Remote Device Management).

The fixture's exterior housing is beautifully balanced design with supremely harmonious interior structure for remarkable control. The sculpted body of the LEDSPOT 400C achieves more than just a striking look.

It's fast and quiet operation LED moving head spot. The fixture is tuned with proper LED refresh rate for flicker free operation for TV and FILM. It's a perfect option for large scale live concerts, TV productions, road shows, theatre, etc.



### 3 FEATURES & SPECIFICATIONS

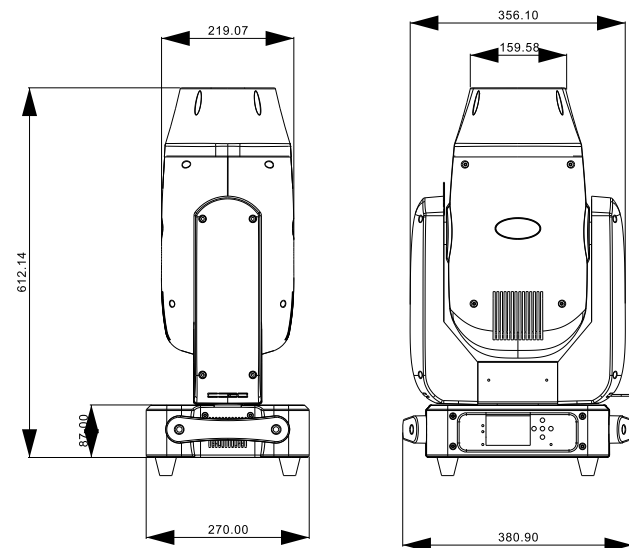
#### Features

400W White LED engine  
 Color Temperature: 8500K (customizable)  
 CRI: ≥85 (customizable)  
 Flicker free operation for broadcast TV and FILM  
 Life Span: 20000H  
 A set of high resolution and precise optics  
 4°-35°Smooth and quiet linear motorized zoom  
 Smooth and precise linear focus  
 Fine control for focus  
 PAN movement: 540°(8/16 bit)  
 PAN movement: 270°(8/16 bit)  
 Fast, quiet, smooth and precise 3-Phase motors  
 Smooth, fast and precise resolution for PAN/TILT movement with low noise operation  
 Scan position memory, auto reposition after unexpected movement  
 PAN/TILT reversible  
 Full CMY color mixing system with linear CTO color correction  
 1 Color wheel with 8 dichroic colors plus open (half color mode available)  
 Variable direction rainbow effect with speed adjustable  
 1 Rotating gobo wheel with 7 rotatable and interchangeable glass gobos plus open with speed adjustable, stream effect, dithering effect and rotatable clockwise or anticlockwise  
 Gobo size 22.7mm (external)/14mm (inner)  
 Fine control for rotating gobo wheel  
 1 Static gobo wheel with 12 gobos plus open  
 Gobo overlay (gobo morphing)  
 3-Facet prism with variable speed and direction  
 8-Facet prism with variable speed and direction  
 0-25Hz LED shutter/strobe effect with variable speed  
 Preset variable/random strobe and dimming pulse effect  
 0-100% Smooth linear LED dimming  
 22/26 DMX channels USITT DMX-512  
 DMX512, master-slave, or auto operation  
 DMX recorder and edit function integrated  
 RDM available (Remote Device Management)  
 Shielded input signal protection for stable signal without interference  
 3-Pin XLR DMX connectors IN/OUT  
 Electronic supply with active PFC  
 AC100-240V 50/60Hz  
 PowerCON IN/ OUT with power switch and fuse  
 430W Power consumption  
 -25°C to 45°C ambient temperature  
 IP20 protection rating  
 N.W.: 22.5kg  
 G.W.: 25.5kg  
 Product Dimensions: 270(D)\*381(W)\*650(H)mm  
 Packing Dimensions: 520(D)\*630(W)\*500(H)mm

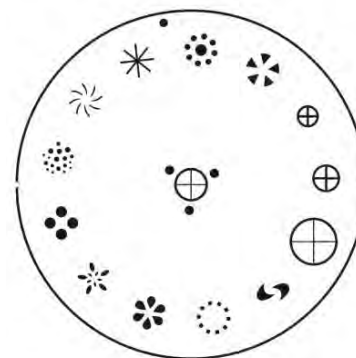
			130-139	Color 4+Color 5
			140-149	Color 5+Color 6
			150-159	Color 6+Color 7
			160-169	Color 7+Color 8
			170-179	Color 8+Color 9
			180-215	Fast to slow positive rainbow
			216-220	Stop
			221-255	Slow to fast negative rainbow
CH9	CH8	C	0-255	0-100%
CH10	CH9	M	0-255	0-100%
CH11	CH10	Y	0-255	0-100%
CH12	CH11	CTO	0-10	No function
			11-255	0-100%
CH13	CH12	FIXED GOBO	0-4	White
			5-9	Gobo 1
			10-14	Gobo 2
			15-19	Gobo 3
			20-24	Gobo 4
			25-29	Gobo 5
			30-34	Gobo 6
			35-39	Gobo 7
			40-44	Gobo 8
			45-49	Gobo 9
			50-54	Gobo 10
			55-59	Gobo 11
			60-64	Gobo 12
			65-69	Gobo 1 shaking slow to fast
			70-74	Gobo 2 shaking slow to fast
			75-79	Gobo 3 shaking slow to fast
			80-84	Gobo 4 shaking slow to fast
			85-89	Gobo 5 shaking slow to fast
			90-94	Gobo 6 shaking slow to fast
			95-99	Gobo 7 shaking slow to fast
			100-104	Gobo 8 shaking slow to fast
			105-109	Gobo 9 shaking slow to fast
			110-114	Gobo 10 shaking slow to fast
			115-119	Gobo 11 shaking slow to fast
			120-127	Gobo 12 shaking slow to fast
			128-190	Fast to slow positive rainbow
			191-192	Stop
			193-255	Slow to fast negative rainbow
CH14	CH13	ROT GOBO	0-9	White
			10-19	Gobo 1
			20-29	Gobo 2

## 6 DMX CHANNELS

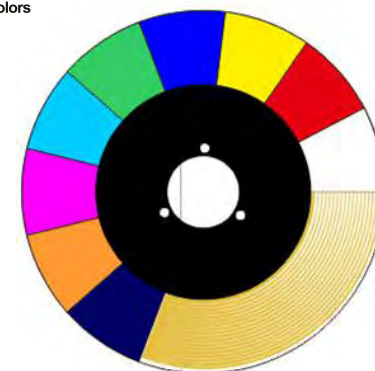
26CH	22CH	FUNCTION	VALUE	DESCRIPTION
CH1	CH1	PAN	0-255	0-540 Degree
CH2	CH2	PAN FINE	0-255	0-2 Degree
CH3	CH3	TILT	0-255	0-270 Degree
CH4	CH4	TILT FINE	0-255	0-1 Degree
CH5		P/T SPEED	0-255	From fast to slow
CH6	CH5	DIMMER	0-255	0-100% Dimmer
CH7	CH6	STROBE	0-3	Close
			4-103	Pulse strobe from slow to fast
			104-107	Open
			108-155	Open strobe from slow to fast
			156-207	Close strobe from slow to fast
			208-212	Open
			213-251	Random strobe
			252-255	Open
CH8	CH7	COLOR	0-9	White
			10-19	Color 1
			20-29	Color 2
			30-39	Color 3
			40-49	Color 4
			50-59	Color 5
			60-69	Color 6
			70-79	Color 7
			80-89	Color 8
			90-99	White+Color 1
			100-109	Color 1+Color 2
			110-119	Color 2+Color 3
			120-129	Color 3+Color 4



Static Gobo



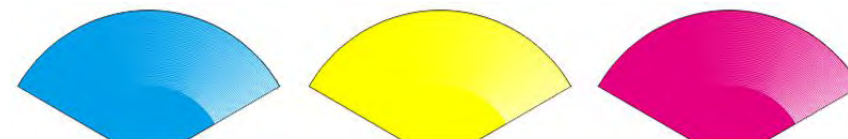
Colors

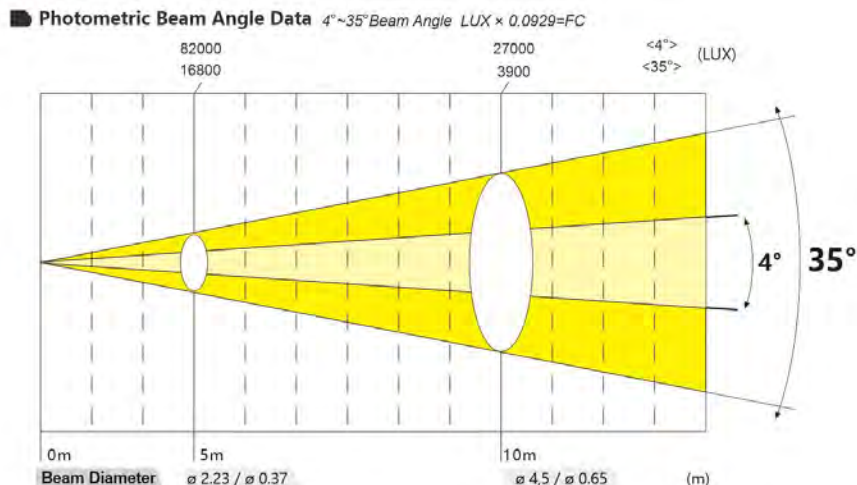


ROTATING GOBOS(OutDia22.7MM\*InDia14MM)



CMY FILTER





## 4 OPERATION INSTRUCTIONS

- The LEDSPOT 400C is for beam effect for on-site decoration purpose.
- Don't turn on the fixture if it's been through severe temperature difference like after transportation because it might damage the light due to the environment changes. So make sure to operate the fixture until it is in normal temperature.
- This light should be keep away from strong shaking during any transportation or movement.
- Don't pull up the light by only the head, or it might cause damages to the mechanical parts.
- Don't expose the fixture in overheat, moisture or environment with too much dust when installing it. And don't lay any power cables on the floor. Or it might cause electronic shock to the people.
- Make sure the installation place is in good safety condition before installing the fixture.
- Make sure to put the safety chain and check whether the screws are screwed properly when installing the fixture.
- Make sure the lens are in good condition. It's recommended to replace the units if there are any damages or severe scratch.
- Make sure the fixture is operated by qualified personnel who knows the fixture before using.
- Keep the original packages if any second shipment is needed.
- Don't try to change the fixtures without any instruction by the manufacturer or the appointed repairing agencies.
- It is not in warranty range if there are any malfunctions from not following the user manual to operate or any illegal operation, like shock short circuit, electronic shock, lamp broke, etc.

- ♦ **P/T Rectify:** Disable or enable position rectify function.  
OFF--> Disable P/T rectify  
ON--> Enable P/T rectify-(Default)
- ♦ **Pan Offset:** Set PAN original position. **Default: 10**
- ♦ **Tilt Offset:** Set TILT original position. **Default: 10**
- ♦ **Lamp when:**  
PowerON--> Turn on the lamp when power on.(Default)  
RstDone--> Turn on the lamp after reset.  
Manual--> Manually turn on the lamp.
- ♦ **Data hold:**  
OFF--> When no DMX signal,return to middle position.(Default)  
ON--> When no DMX signal,stop in the final position.
- ♦ **Factory Setting:** Restore all parameter to factory setting.

### 2.3.6 STAT-->Status: View status

Enter the page as shown in Figure 12:

Address	Work Mode	DMX ...
WrokMode	Address	001
Display	Version	B5R. 1. 1 16n
TestMode	Elapse	000H 04M
Advanced	Tatol	00000H 04M
Status	<div>DMX Clr</div> <div>SysRst</div>	
Escape		

Figure 12 page of status

- ♦ **Work Mode:** Show the current working mode.
- ♦ **Address:** Show the current address.
- ♦ **Version:** Show the version of the lamp.
- ♦ **Elapse:** Working hours after turn on.
- ♦ **Tatol:** Cumulative hours of operation



ON--> Enable touch function.(Default)

OFF--> Dosable touch function.

- **Touch adjust:** Adjust touch function. Normally, not enter this item.

#### 2.3.4 TEST--> TestMode

Enter the page as shown in Figure 10, Light will into test mode, in this mode, the light does not receive the data for DMX controller:

Address	PAN	000
WorkMode	TILT	000
Display	FOCUS	000
TestMode	COLOR	000
Advanced	GOBO	000
Status	PRISM	000
Escape	FROST	000
	STROBE	000

Figure 10 page of Test

- **PAN:** range for 0 to 255;
- **TILT:** range for 0 to 255;
- **FOCUS:** range for 0 to 255;
- **COLOR:** range for 0 to 255;
- **GOBO:** range for 0 to 255;
- **PRISM:** range for 0 to 255;
- **FROST:** range for 0 to 255;;
- **STROBE:** range for 0 to 255;

#### 2.3.5 ADVA-->Advanced: Set light run parameter

Enter the page as shown in Figure 10, set the parameter of light:

Address	PAN Insert	OFF
WorkMode	TILT Inset	OFF
Display	P/T Rectify	ON
TestMode	PAN Offset	010
Advanced	TILT Offset	010
Status	Lamp when	PowerON
Escape	Data hold	OFF
	Factory Setting	

Figure 11 page of run parameter

- **Pan Invert: Reverse PAN move**  
OFF--> Pan Normal move.(Default)  
ON--> Reverse PAN move.
- **Tilt Invert: Reverse TILT move**  
OFF--> Tilt Normal move.(Default)  
ON--> Reverse Tilt move.

## 5 MENU OPERATIONS

#### 2.2.2 Parameter value setting

When the selected item is value need to been modified, the dialog shown in Figure 4 will popup.



Figure 4 Dialog of value setting

- **Modify value:** Can quickly modify value via pull the slider to the desired position, or click the button of 'up' or 'down' whit finger on the right side to set the exact desired value, another way is roll encoder on the right hand side of panel.
- **Apply value:** When Value had been modified, Then press the bottom of 'apply' in the left corner to apply to the light, but hav' t saved;
- **Save Value:** Any time, click on the lower right corner of the "OK" button, the setting will been saved into internal memory.

#### 2.2.3 Boolean parameter setting

- when the selected parameters is a Boolean value (such as ON or OFF), can directly modify setting by chik corresponding item, the setting will been saved right now.
- When the parameter is a key item, chik corresponding item, a dialog shown in Figure 5 will been popup ask for the confirm. Chik 'sure' to confirm.



Figure 5 Dialog of confirm

#### 2.2.4 Sub Menu (Parameter)

Chick item of main menu, enter corresponding sub menu, shown in Figure 6, total 6 sub menu, includes class of parameter and status:

- **ADDRESS:** Set light DMX address.
- **WORKMOD:** Set light work mode, master or slave mode when in auto run mode.
- **DISPLAY:** Set display parameter, eg. select language.
- **TEST:** Used for test light, modify DMX channel data to test function, the corresponding function of reference channel function table.
- **ADVANCE:** Set light running parameter.
- **STATUS:** view light current status.

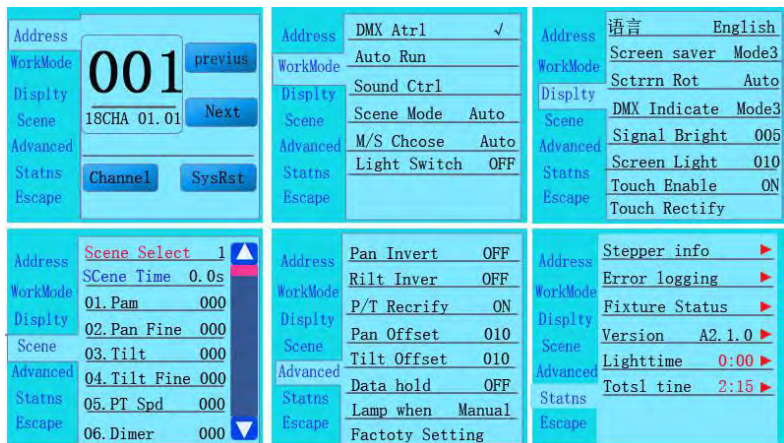


Figure 6 Parameter menu

#### Operation and parameter instruction

Via following operation, enter sub menu(parameter menu) shown in Figure 6

- ☐ In main menu, click 1/6 function button into corresponding parameter menu.
- ☐ In sub menu(page), click main item on the left side of display, can shift to corresponding sub menu(page) quickly.

##### 2.3.1 ADDR--> Address: Set DMX Address

Click and select the "ADDR", can enter the page of DMX address setting, range from 1 to 512, the address code shouldn't be not greater than (512- channels quantity), otherwise the light will not been controlled. Following is the operation:

Enter the page of DMX address, as shown in Figure 7, click the blank area in right side of display will pop-up diglog as in Fig. 4, modify value, then click ' ENTER' to confirm and save DMX address code.

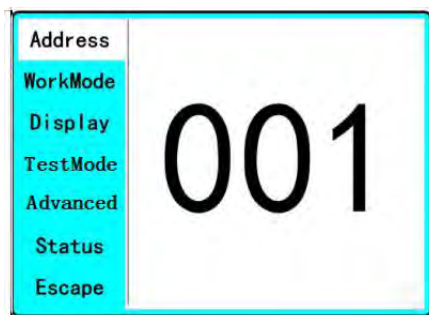


Figure 7 page of DMX Address

##### 2.3.2 MODE--> WorkMode: Set Light work mode

Enter the page of ' WorkMode' as shown in Figure 8 and modify setting. Can set light work mode, control lamp and DMX channel mode.



Figure 8 page of work mode

- **DMX Ctrl:** Choose to set DMX Mode,
- **Auto Run:** Choose to set Auto Mode,
- **Sound Ctrl:** Choose to set Sound Mode,
- **M/S Choose:** Available just in ' AUTO RUN' or ' SOUND Ctrl' mode.  
ON--> Master. (Data will be send to other slave lamp immediately.)  
OFF--> Slaver.(NOT send data to other lamp via DMX Cable).(Default)
- **Light Switch:**  
ON--> Turn on the light,  
OFF--> Turn off the light.
- **Channel Qty:** Light support 2 DMX Channel mode: sample or extend.  
Simple --> 16CH.(Default)  
Expand--> 20CH(or null).

##### DISP-->DISPLAY: Set display

Light support 2 language, rotation display, Enter page as shown in Figure9 to set parameter following:

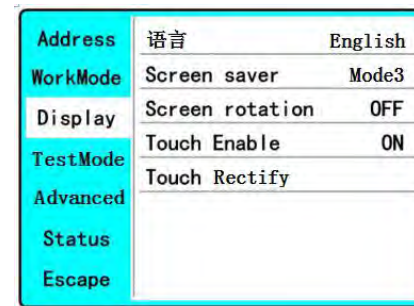


Figure9 page of display

- **Language:** English / 中文.
- **Screen Saver:** when panel is idle(these is no operation in 10 second), displayer will enter saver status.  
OFF--> No screen saver.  
Mode1--> Power-saving mode, turn off the display.  
Mode2--> Displays the current address.  
Mode3--> Displays the icon and the current working mode.(Default)
- **Screen Rotion: To turning display.**  
ON--> Normal display.(Default)  
OFF--> 180° turning display.
- **Touch enable:** Disable or enable touch function,.